



EVO 55 ROAD BARRIER INSTALLATION GUIDE

The Evo 55 barrier system comes in lengths of 1m and 1.5m. The system is simple and easy to install and requires no tools or additional accessories – just water!

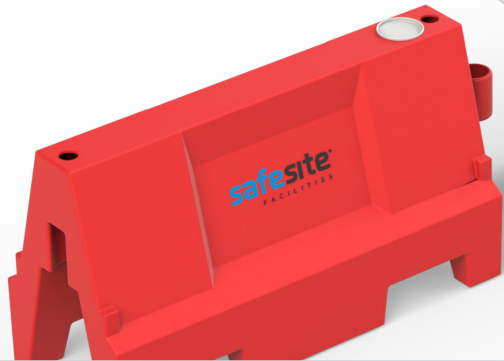
People to Install:



Equipment / Accessories Needed:

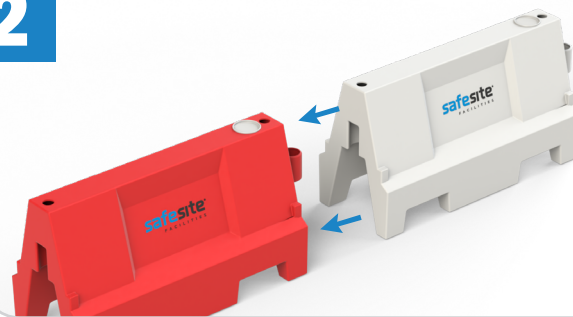
No accessories required

1



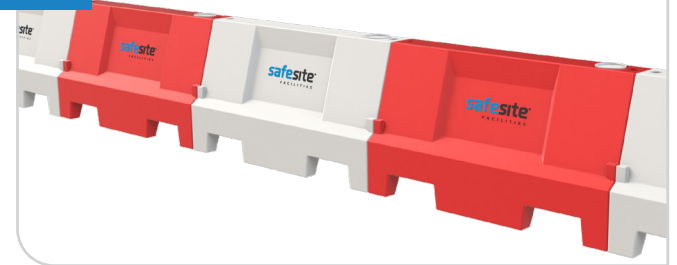
Place the barriers along the perimeter line you are creating. All the barriers should face the same direction.

2



Lift the end of the second barrier up and over the plastic loop which sticks out of the end of the barrier.

3



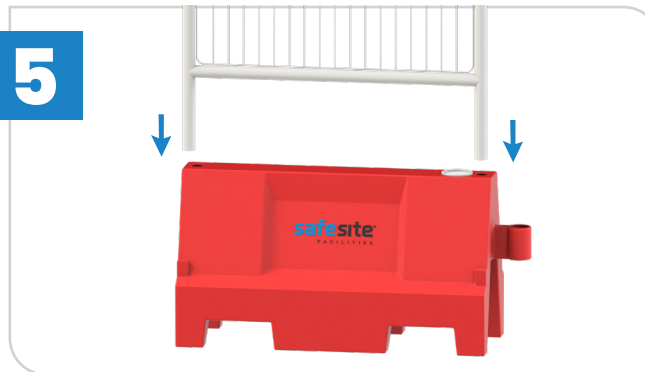
The barriers should fit together snugly without any gaps. Repeat this process with other barriers needed.

4



Once you are happy with how the barriers have been linked and arranged, open the cap at the top of the barrier and fill with water. Once filled, replace cap.

5



Slot the mesh fence panels, post and rail or reflect panels into the holes at either end of the barriers.

6



Repeat the same process for the rest of the barriers.



Useful Tip: To empty the barriers, tip the barriers on to their side and open the bung at the top to release the water.



Wear the appropriate PPE for this task.